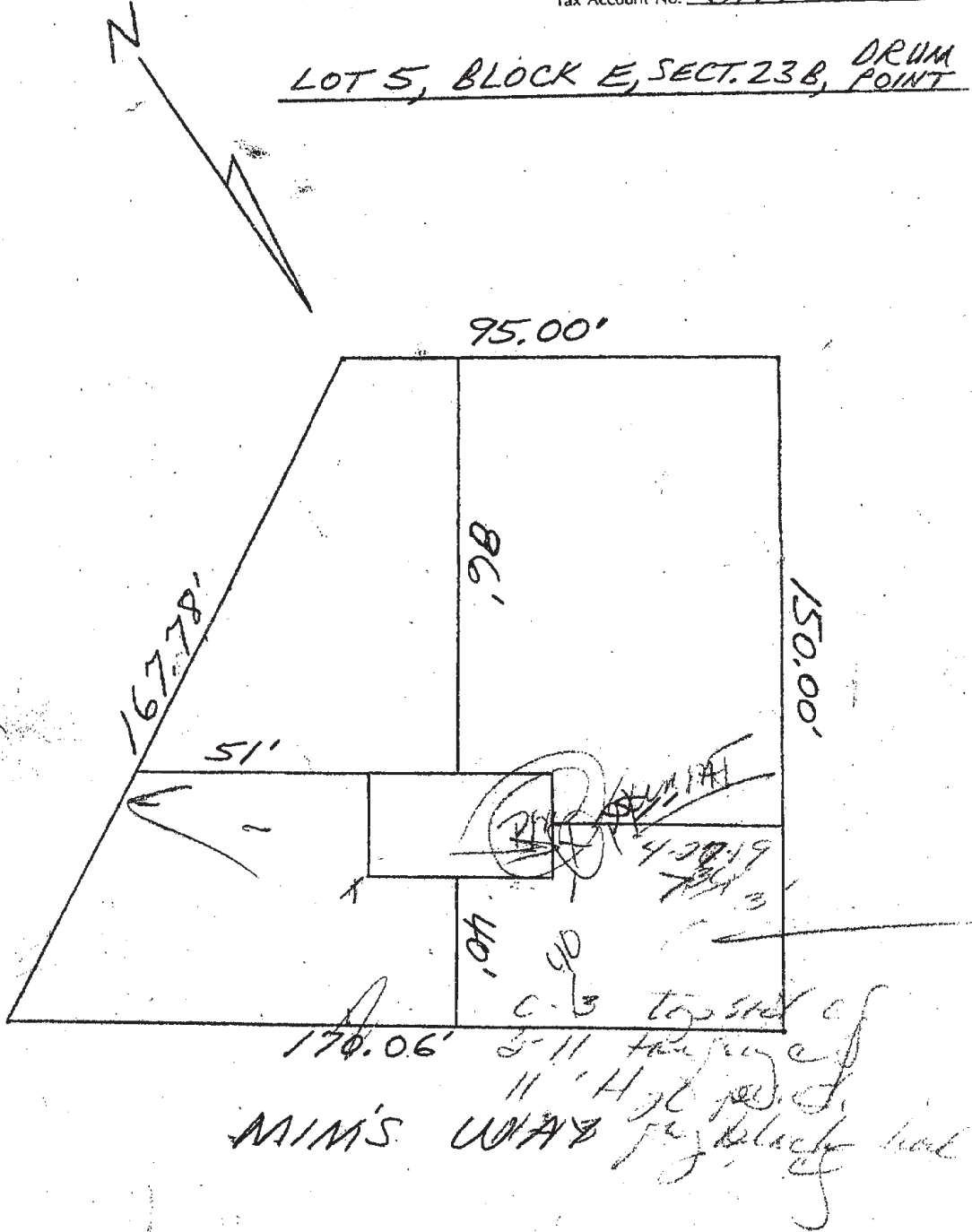


CALVERT COUNTY HEALTH DEPARTMENT

Plot Plan

Tax Account No. 01174924

LOT 5, BLOCK E, SECT. 23B, DRUM POINT



Plot plan must be drawn to scale.
 Engineer's scale only (1 inch = 10,20,30 ft. etc.).
 —Indicate the dimensions of all property lines
 —Show the proposed house locations, its dimensions